

Life Line Safe Homes LLC
5700 Tennyson Pkwy Suite 300
Plano Tx 75024

Sales Quote

9/2/2024



Proposal

John Sample
123 Main St
Anywhere Tx

Project

Standby Generator

Description	Qty	Unit price	Total price
Generac #7043 22/19.5 kw Air Cooled Generator			\$6,379.00
Switch Smart Ready w/ 200amp Transfer			\$0.00
5 Year Extended Warranty			\$795.00
Custom Base Pad - Concrete 3x5			\$1,126.00
Exide Battery Group 35 / Cold Weather Kit Included			\$243.75
Installation / Permitting / Inspections			\$6,699.00
- Installation Includes - Delivery, Placement, Start Up and Customer Training			
- Plumbing - Regulator , Piping and Connections			
- Electrical - Wiring and Installation of ATS and Switch Gear			
Promotional Discount			-\$500.00

Subtotal \$14,742.75

Tax \$0.00

\$14,742.75

Thank you fo the opportunity to earn your business!

20/22/24 kW

GUARDIAN® SERIES Residential Standby Generators Air-Cooled Gas Engine

Standby Power Rating

G007038-1, G007039-1, G007038-3, G007039-3 (Aluminum - Bisque) - 20 kW 60 Hz
G007042-10, G007042-11, G007043-10, G007043-11 (Aluminum - Bisque) - 22 kW 60 Hz
G007209-10, G007210-10 (Aluminum - Bisque) - 24 kW 60 Hz

INCLUDES:

- True Power™ Electrical Technology
- Two-line multilingual digital LCD Evolution™ controller (English/Spanish/French/Portuguese)
- 200 amp service rated transfer switch available
- Electronic governor
- Standard Wi-Fi® connectivity
- System status & maintenance interval LED indicators
- Sound attenuated enclosure
- Flexible fuel line connector
- Natural gas or LP gas operation
- 5 Year limited warranty
- Listed and labeled for installation as close as 18 in (457 mm) to a structure.*
**Must be located away from doors, windows, and fresh air intakes and in accordance with local codes.*



Product shown with optional fascia kit



Note: CETL or CUL certification only applies to unbundled units and units packaged with limited circuit switches. Units packaged with the Smart Switch are ETL or UL certified in the USA only.

FEATURES

- **INNOVATIVE ENGINE DESIGN & RIGOROUS TESTING** are at the heart of Generac's success in providing the most reliable generators possible. Generac's G-Force engine lineup offers added peace of mind and reliability for when it's needed the most. The G-Force series engines are purpose built and designed to handle the rigors of extended run times in high temperatures and extreme operating conditions.
- **TRUE POWER™ ELECTRICAL TECHNOLOGY:** Superior harmonics and sine wave form produce less than 5% Total Harmonic Distortion for utility quality power. This allows confident operation of sensitive electronic equipment and micro-chip based appliances, such as variable speed HVAC systems.
- **TEST CRITERIA:**
 - ✓ **PROTOTYPE TESTED** ✓ **NEMA MG1-22 EVALUATION**
 - ✓ **SYSTEM TORSIONAL TESTED** ✓ **MOTOR STARTING ABILITY**
- **MOBILE LINK® CONNECTIVITY:** FREE with select Guardian Series Home standby generators, Mobile Link Wi-Fi allows users to monitor generator status from anywhere in the world using a smartphone, tablet, or PC. Easily access information such as the current operating status and maintenance alerts. Users can connect an account to an authorized service dealer for fast, friendly, and proactive service. With Mobile Link, users are taken care of before the next power outage.
- **SOLID-STATE, FREQUENCY COMPENSATED VOLTAGE REGULATION:** This state-of-the-art power maximizing regulation system is standard on all Generac models. It provides optimized FAST RESPONSE to changing load conditions and MAXIMUM MOTOR STARTING CAPABILITY by electronically torque-matching the surge loads to the engine. Digital voltage regulation at ±1%.
- **SINGLE SOURCE SERVICE RESPONSE** from Generac's extensive dealer network provides parts and service know-how for the entire unit, from the engine to the smallest electronic component.
- **GENERAC TRANSFER SWITCHES:** Long life and reliability are synonymous with GENERAC POWER SYSTEMS. One reason for this confidence is that the GENERAC product line is offered with its own transfer systems and controls for total system compatibility.

20/22/24 kW

Features and Benefits

Engine

- Generac G-Force design
- “Spiny-lok” cast iron cylinder walls
- Electronic ignition/spark advance
- Full pressure lubrication system
- Low oil pressure shutdown system
- High temperature shutdown

Maximizes engine “breathing” for increased fuel efficiency. Plateau honed cylinder walls and plasma moly rings help the engine run cooler, reducing oil consumption and resulting in longer engine life.

Rigid construction and added durability provide long engine life.

These features combine to assure smooth, quick starting every time.

Pressurized lubrication to all vital bearings means better performance, less maintenance, and longer engine life. Now featuring up to a 2 year/200 hour oil change interval.

Shutdown protection prevents catastrophic engine damage due to low oil.

Prevents damage due to overheating.

Generator

- Revolving field
- Skewed stator
- Displaced phase excitation
- Automatic voltage regulation
- EPA Certified for non-emergency applications
- UL 2200 listed

Allows for a smaller, light weight unit that operates 25% more efficiently than a revolving armature generator.

Produces a smooth output waveform for compatibility with electronic equipment.

Maximizes motor starting capability.

Regulating output voltage to $\pm 1\%$ prevents damaging voltage spikes.

Allows unit to be used for demand response applications (excluding 20 kW units).

For your safety.

Transfer Switch (if applicable)

- Fully automatic
- NEMA 3R
- Integrated load management technology
- Remote mounting

Transfers vital electrical loads to the energized source of power.

Can be installed inside or outside for maximum flexibility.

Capability to manage additional loads for efficient power management.

Mounts near an existing distribution panel for simple, low-cost installation.

Evolution™ Controls

- AUTO/MANUAL/OFF illuminated buttons
- Two-line multilingual LCD
- Sealed, raised buttons
- Utility voltage sensing
- Generator voltage sensing
- Utility interrupt delay
- Engine warm-up
- Engine cool-down
- Programmable exercise
- Smart battery charger
- Main line circuit breaker
- Electronic governor

Selects the operating mode and provides easy, at-a-glance status indication in any condition.

Provides homeowners easily visible logs of history, maintenance, and events up to 50 occurrences.

Smooth, weather-resistant user interface for programming and operations.

Constantly monitors utility voltage, setpoints 65% dropout, 80% pick-up, of standard voltage.

Constantly monitors generator voltage to verify the cleanest power delivered to the home.

Prevents nuisance start-ups of the engine, adjustable 2-1500 seconds from the factory default setting of 5 seconds by a qualified dealer.

Verifies engine is ready to assume the load, setpoint approximately 5 seconds.

Allows engine to cool prior to shutdown, setpoint approximately 1 minute.

Operates engine to prevent oil seal drying and damage between power outages by running the generator for 5 minutes every other week. Also offers a selectable setting for weekly or monthly operation providing flexibility and potentially lower fuel costs to the owner.

Delivers charge to the battery only when needed at varying rates depending on outdoor air temperature. Compatible with lead acid and AGM-style batteries.

Protects generator from overload.

Maintains constant 60 Hz frequency.

Unit

- SAE weather protective enclosure
- Enclosed critical grade muffler
- Small, compact, attractive

Sound attenuated enclosures ensure quiet operation and protection against mother nature, withstanding winds up to 150 mph (241 km/h). Hinged key locking roof panel for security. Lift-out front for easy access to all routine maintenance items. Electrostatically applied textured epoxy paint for added durability.

Quiet, critical grade muffler is mounted inside the unit to prevent injuries.

Makes for an easy, eye appealing installation, as close as 18 in (457 mm) away from a structure.

Installation System

- 14 in (35.6 cm) flexible fuel line connector
Listed ANSI Z21.75/CSA 6.27 outdoor appliance connector for the required connection to the gas supply piping.
- Integral sediment trap
Meets IFGC and NFPA 54 installation requirements.

Connectivity (Wi-Fi equipped models only)

- Ability to view generator status
Monitor generator with a smartphone, tablet, or computer at any time via the Mobile Link application for complete peace of mind.
- Ability to view generator Exercise/Run and Total Hours
Review the generator's complete protection profile for exercise hours and total hours.
- Ability to view generator maintenance information
Provides maintenance information for the specific model generator when scheduled maintenance is due.
- Monthly report with previous month's activity
Detailed monthly reports provide historical generator information.
- Ability to view generator battery information
Built in battery diagnostics displaying current state of the battery.
- Weather information
Provides detailed local ambient weather conditions for generator location.

20/22/24 kW

Specifications

Generator

Model	G007038-1 G007039-1 (20 kW)	G007042-10 G007043-10 (22 kW)	G007038-3 G007039-3 (20 kW)	G007042-11 G007043-11 (22 kW)	G007209-10 G007210-10 (24 kW)
Rated maximum continuous power capacity (LP)	20,000 Watts*	22,000 Watts*	20,000 Watts*	22,000 Watts*	24,000 Watts*
Rated maximum continuous power capacity (NG)	18,000 Watts*	19,500 Watts*	18,000 Watts*	19,500 Watts*	21,000 Watts*
Rated voltage	240				
Rated maximum continuous load current – 240 volts (LP/NG)	83.3 / 75.0	91.7 / 81.3	83.3 / 75.0	91.7 / 81.3	100 / 87.5
Total Harmonic Distortion	Less than 5%				
Main line circuit breaker	90 amp	100 amp	90 amp	100 amp	100 amp
Phase	1				
Number of rotor poles	2				
Rated AC frequency	60 Hz				
Power factor	1.0				
Battery requirement (not included)	12 Volts, Group 26R 540 CCA minimum or Group 35AGM 650 CCA minimum				
Unit weight (lb / kg)	448 / 203	466 / 211	436 / 198	445 / 202	455 / 206
Dimensions (L x W x H) in / cm	48 x 25 x 29 / 121.9 x 63.5 x 73.7				
Sound output in dB(A) at 23 ft (7 m) with generator operating at normal load**	67	67	67	67	67
Sound output in dB(A) at 23 ft (7 m) with generator in Quiet-Test™ low-speed exercise mode**	55	57	55	57	57
Exercise duration	5 min				

Engine

Engine type	GENERAC G-Force 1000 Series				
Number of cylinders	2				
Displacement	999 cc				
Cylinder block	Aluminum w/ cast iron sleeve				
Valve arrangement	Overhead valve				
Ignition system	Solid-state w/ magneto				
Governor system	Electronic				
Compression ratio	9.5:1				
Starter	12 VDC				
Oil capacity including filter	Approx. 1.9 qt / 1.8 L				
Operating rpm	3,600				
Fuel consumption					
Natural gas	ft ³ /hr (m ³ /hr)				
	1/2 Load	204 (5.78)	228 (6.46)	164 (4.64)	203 (5.75)
	Full Load	301 (8.52)	327 (9.26)	287 (8.13)	306 (8.66)
Liquid propane	ft ³ /hr (gal/hr) [L/hr]				
	1/2 Load	87 (2.37) [8.99]	92 (2.53) [9.57]	86 (2.36) [8.95]	92 (2.53) [9.57]
	Full Load	130 (3.56) [13.48]	142 (3.90) [14.77]	136 (3.74) [14.15]	142 (3.90) [14.77]

Note: **Fuel pipe must be sized for full load.** Required fuel pressure to generator fuel inlet at all load ranges - 3.5–7 in water column (0.87–1.74 kPa) for NG, 10–12 in water column (2.49–2.99 kPa) for LP gas. For BTU content, multiply ft³/hr x 2500 (LP) or ft³/hr x 1000 (NG). For Megajoule content, multiply m³/hr x 93.15 (LP) or m³/hr x 37.26 (NG).

Controls

Two-line plain text multilingual LCD	Simple user interface for ease of operation.
Mode buttons: AUTO	Automatic start on utility failure. Weekly, Bi-weekly, or Monthly selectable exerciser.
MANUAL	Start with starter control, unit stays on. If utility fails, transfer to load takes place.
OFF	Stops unit. Power is removed. Control and charger still operate.
Ready to Run/Maintenance messages	Standard
Engine run hours indication	Standard
Programmable start delay between 2–1500 seconds	Standard (programmable by dealer only)
Utility Voltage Loss/Return to Utility adjustable (brownout setting)	From 140–171 V / 190–216 V
Future Set Capable Exerciser/Exercise Set Error warning	Standard
Run/Alarm/Maintenance logs	50 events each
Engine start sequence	Cyclic cranking: 16 sec on, 7 rest (90 sec maximum duration).
Starter lock-out	Starter cannot re-engage until 5 sec after engine has stopped.
Smart Battery Charger	Standard
Charger Fault/Missing AC warning	Standard
Low Battery/Battery Problem Protection and Battery Condition indication	Standard
Automatic Voltage Regulation with Over and Under Voltage Protection	Standard
Under-Frequency/Overload/Stepper Overcurrent Protection	Standard
Safety Fused/Fuse Problem Protection	Standard
Automatic Low Oil Pressure/High Oil Temperature Shutdown	Standard
Overcrank/Overspeed (@ 72 Hz)/rpm Sense Loss Shutdown	Standard
High Engine Temperature Shutdown	Standard
Internal Fault/Incorrect Wiring protection	Standard
Common external fault capability	Standard
Field upgradable firmware	Standard

Rating definitions - Optional Standby: Applicable for supplying backup power for the duration of the utility power outage with correct maintenance performed. No overload capability is available for this rating. (All ratings in accordance with BS5514, ISO3046, UL2200, and DIN6271).

* Maximum kilovolt amps and current are subject to and limited by such factors as fuel BTU/megajoule content, ambient temperature, altitude, engine power and condition, etc. Maximum power decreases approximately 3.5% for each 1,000 ft (304.8 m) above sea level; and also will decrease approximately 1% for each 10 °F (6 °C) above 60 °F (16 °C).

**Sound levels are taken from the front of the generator. Sound levels taken from other sides of the generator may be higher depending on installation parameters.

20/22/24 kW

Service Rated Automatic Transfer Switch Features

- Intelligently manages up to four air conditioner loads with no additional hardware.
- Up to eight additional large (240 VAC) loads can be managed when used in conjunction with Smart Management Modules (SMMs).
- Electrically operated, mechanically-held contacts for fast, clean connections.
- Main breakers are rated for 80% continuous load.
- 2-pole, 250 VAC contactors.
- Service equipment rated, dual coil design.
- Rated for both aluminum and copper conductors.
- Main contacts are silver plated or silver alloy to resist welding and sticking.
- NEMA/UL 3R aluminum outdoor enclosure allows for indoor or outdoor mounting flexibility.

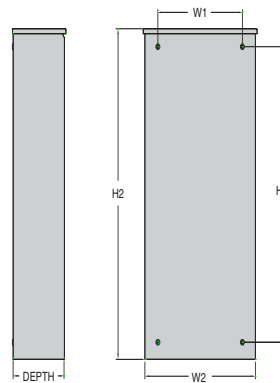
Dimensions

200 Amps 120/240, 1Ø Open Transition Service Rated					
	Height		Width		Depth
	H1	H2	W1	W2	
in	26.8	30.1	10.5	13.5	6.9
cm	67.95	76.43	26.67	34.18	17.5

Wire Ranges		
Conductor Lug	Neutral Lug	Ground Lug
250 MCM - #6	350 MCM - #6	2/0 - #14

Model	G007039-1, G007039-3 (20 kW) G007043-10, G007043-11 (22 kW) G007210-10 (24 kW)
No. of poles	2
Current rating (amps)	200
Voltage rating (VAC)	120/240, 1Ø
Utility voltage monitor (fixed)*	
-Pick-up	80%
-Dropout	65%
Return to Utility*	Approx. 13 sec
ETL or UL listed	Standard
Enclosure type	NEMA/UL 3R
Circuit breaker protected	22,000
Lug range	250 MCM - #6

*Function of Evolution controller
Exercise can be set to weekly, bi-weekly, or monthly



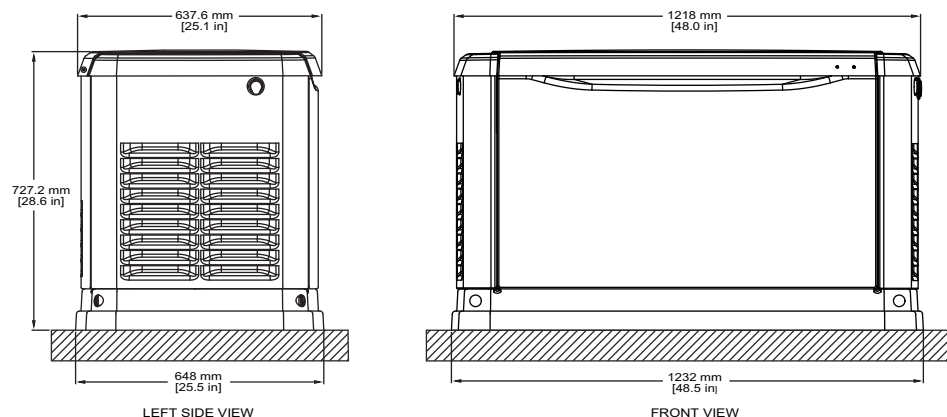
20/22/24 kW

Available Accessories

Model #	Product	Description
G007101-0	Battery Pad Warmer	Pad warmer rests under the battery. Recommended for use if temperature regularly falls below 0 °F (-18 °C). (Not necessary for use with AGM-style batteries).
G007102-0	Oil Warmer	Oil warmer slips directly over the oil filter. Recommended for use if temperature regularly falls below 0 °F (-18 °C).
G007103-1	Breather Warmer	Breather warmer is for use in extreme cold weather applications. For use with Evolution controllers only in climates where heavy icing occurs.
G005621-0	Auxiliary Transfer Switch Contact Kit	The auxiliary transfer switch contact kit allows the transfer switch to lock out a single large electrical load that may not be needed. Not compatible with 50 amp pre-wired switches.
G007027-0 - Bisque	Fascia Base Wrap Kit	The fascia base wrap snaps together around the bottom of the new air-cooled generators. This offers a sleek, contoured appearance as well as offering protection from rodents and insects by covering the lifting holes located in the base.
G005703-0 - Bisque	Touch-Up Paint Kit	If the generator enclosure is scratched or damaged, it is important to touch up the paint to protect from future corrosion. The touch-up paint kit includes the necessary paint to correctly maintain or touch up a generator enclosure.
G006485-0	Scheduled Maintenance Kit	Generac's scheduled maintenance kit provides all the items necessary to perform complete routine maintenance on a Generac automatic standby generator (oil not included).
G007005-0	Wi-Fi LP Tank Fuel Level Monitor	The Wi-Fi enabled LP tank fuel level monitor provides constant monitoring of the connected LP fuel tank. Monitoring the LP tank's fuel level is an important step in verifying the generator is ready to run during an unexpected power failure. Status alerts are available through a free application to notify users when the LP tank is in need of a refill.
G007000-0 (50 amp) G007006-0 (100 amp)	Smart Management Module	Smart Management Modules (SMM) are used to optimize the performance of a standby generator. It manages large electrical loads upon startup and sheds them to aid in recovery when overloaded. In many cases, using SMM's can reduce the overall size and cost of the system.
G007169-0 - 4G LTE G007170-0 - Wi-Fi/ Ethernet	Mobile Link® Cellular Accessories	The Mobile Link family of Cellular Accessories allow users to monitor generator status from anywhere in the world, using a smart phone, tablet, or PC. Easily access information such as the current operating status and maintenance alerts. Users can connect an account with an authorized service dealer for fast, friendly, and proactive service. With Mobile Link, users are taken care of before the next power outage.
G007220-0 - Bisque	Base Plug Kit	Base plugs snap into the lifting holes on the base of air-cooled home standby generators. This offers a sleek, contoured appearance, as well as offers protection from rodents and insects by covering the lifting holes located in the base. Kit contains four plugs, sufficient for use on a single air-cooled home standby generator.

Dimensions & UPCs

Model	UPC
G007038	696471074185
G007039	696471074192
G007042	696471074208
G007043	696471074215
G007209	696471071511
G007210	696471084801



Dimensions shown are approximate. See installation manual for exact dimensions. DO NOT USE THESE DIMENSIONS FOR INSTALLATION PURPOSES.

10-26kW GUARDIAN® SERIES

GENERAC®

Home Standby Generators



WITH FREE
**MOBILE LINK WIRELESS
CONNECTIVITY**

Choose the #1 selling home standby generator brand

Generac's Guardian Series generators provide the automatic backup power you need to protect your home and family during a power outage. Connected to your existing LP or natural gas fuel supply, it kicks in within seconds of sensing power loss—automatically—and runs for as long as necessary until utility power returns. Choose from Generac's industry leading lineup to power just the essentials or Generac's 26kW, the largest air-cooled generator in the market, for whole-house coverage.

Features & Benefits:



GENERAC'S G-FORCE ENGINE

Are purpose-built, pressure-lubricated engines capable of handling the rigors of generator use, resulting in power that's more reliable and requires less routine maintenance than any competitive engine.



TRUEPOWER™ TECHNOLOGY

Delivers best-in-class power quality with less than 5% total harmonic distortion for clean, smooth operation of sensitive electronics and appliances.



QUIET-TEST™ SELF-TEST MODE

Runs at a lower RPM for a five or twelve minute test, making generators significantly quieter than other brands, while consuming less fuel.



GENERAC'S EVOLUTION™ CONTROLLER

Features a multilingual LCD display that allows you to monitor battery status and track maintenance intervals to ensure your generator is always in top operating condition.



TOUGH, DURABLE ENCLOSURES

Our RhinoCoat™ powder-coated finish helps make corrosion-resistant aluminum perfect for all weather conditions.





Get 24/7 peace of mind with Mobile Link™

Mobile Link remote monitoring lets you get and share information about your home standby generator no matter where you are, using your computer, smart phone, or mobile device.



Alert

Get real-time notifications about your generator.



Protect

Remotely access your generator's health.



Manage

View your maintenance needs.

Also Featuring:



24/7/365 CUSTOMER SUPPORT TEAM

Standing by all day, every day from our headquarters in Wisconsin to answer any questions you might have.



BUILT IN THE USA*

Generac generators and engines are engineered and built in the USA*

**Assembled in the USA using domestic and foreign parts.*



5-YEAR LIMITED WARRANTY

Included with all home standby generators.



Home Standby Generators

SPECIFICATIONS (LP/NG)	10/9 kW	14/14 kW	18/17 kW	22/19.5 kW	24/21 kW	26/22.5 kW
Generator Only Model	7171	7223	7226	7042	7209	7290
Generator / 100 Amp Select Circuit Switch Model	7172	7224	-	-	-	-
Generator / 200 Amp Service Rated Load Shedding Smart Switch Package Model	-	7225	7228	7043	7210	7291
Voltage (Single Phase)	120 / 240					
Amps @ 240V LPG	41.7	58.3	75.0	91.7	100	108.3
Amps @ 240V NG	37.5	58.3	70.8	81.3	87.5	93.8
Engine/Alternator RPM	3600 / 3600					
Engine	Generac G-Force					
Engine Displacement	460cc	816cc		999cc		999cc
Fuel Consumption @ 1/2 Load - NG cu. ft/hr	101	195	169	228*	203	188
Fuel Consumption @ Full Load - NG cu. ft/hr	127	256	247	327*	306	333
Fuel Consumption @ 1/2 Load - LPG cu. ft/hr (gal/hr)	36 (0.97)	65 (1.81)	62 (1.70)	92 (2.53)*		75
Fuel Consumption @ Full Load - LPG cu. cu. ft/hr (gal/hr)	54 (1.48)	112 (3.07)	110 (3.02)	142 (3.90)*		132
Quiet-Test Mode	Yes					
db(A) at Exercise	57	55		57	57	57
db(A) at Normal Operating Load	61	65		67	67	67
Enclosure	Aluminum					
Enclosure Color	Bisque					
Warranty	5-Year Limited					
Dimensions - L" x W" x H" in. (mm)	48 x 25 x 29 (1218 x 638 x 727)					
Weight (lb)	338	385	420	466*	445	518
Mobile Link Wireless Connectivity	Yes					

*7042-2 & 7043-2 specifications



NATIONWIDE DEALER SERVICE NETWORK

Generac's commitment to service includes scheduled maintenance programs, warranty assistance and emergency service to ensure that Generac customers are never left powerless. The largest nationwide dealer network has factory-trained technicians on staff and maintains large inventories of Generac parts, components and accessories. Find a dealer near you at Generac.com.

Generac Power Systems, Inc.
S45 W29290 Hwy. 59, Waukesha, WI 53189

www.Generac.com | 888-GENERAC (436-3722)

201902144 REV 08/22

©2022 Generac Power Systems. All rights reserved.
Specifications are subject to change without notice.

GENERAC®

GENERAC®



**Special
Offer Inside**

DETAILS ON PAGE 2



Your Guide to Home Standby Generator Ownership



\$535 Bonus Offer*

Please review the enclosed Buyer's Guide, and then take the next step by requesting a **FREE QUOTE**. There's no obligation to buy, but if you decide that a Generac Home Standby Generator is right for you, we'll include the below bonus offer absolutely FREE —

5 YEAR EXTENDED WARRANTY

Includes All Parts & Labor

Instead of our standard 5-year limited warranty, you'll receive our 5-year extended parts & labor limited warranty—a \$535 US / \$715 CAN Value FREE.

*Bonus offer contingent on requesting a free quote by date shown, and subsequently purchasing a home standby generator from the authorized, participating dealer. Offer is not available at retail, .com, and wholesale outlets. Additional Terms and Conditions apply. Visit GeneracHomeGenerators.com or call 800-864-7415 for more details.

In today's world, our homes have become our offices, our schools, our gyms, and our sanctuaries. When utility power fails, whether it be from aging equipment, bad weather, animals, or accidents, your family and home could be at risk. If 2020 has taught us anything, it's that being prepared for the unexpected is essential, and with a Generac home standby generator, you can be.

Generac is the most trusted and reliable manufacturer of home standby generators in the world. Since 1959, more than 2 million Generac generators have been installed across the country. Each year, we invest millions in research and development, innovative technologies, and our people, ensuring that we design, engineer, and build the best products for our customers.

In fact, Generac is the only manufacturer in the industry that offers a 24/7, 365 customer support team, and has the largest, most experienced distribution network to help keep your generators maintained so they are ready when you need them most.

Generac has simplified the home standby generator buying process so you can feel comfortable and confident with your decision. In this guide, we will provide you with the answers to questions, such as:

- What is standby power and how does it work?
- Can I back up my whole home, or just certain parts of it?
- How much does an automatic standby generator cost?
- How can I get the generator installed, and how long does it take?
- How do I get started?

When you're ready to take the next step, request a free, no obligation quote. One of our authorized dealers will assess your needs and recommend a backup power system that is right for your home and fits within your budget. Remember, with a Generac home standby generator you're in control of your power.

Thank you for trusting Generac with your backup power needs, and we hope to welcome you to the Generac family soon.

Sincerely,



Aaron Jagdfeld
President & Chief Executive Officer
Generac Power Systems, Inc.



5 Great Reasons to Request a Free Quote Today!

1

FREE EXPERT ADVICE

If you are spending more than \$1,000 on an investment for your home, a good practice is to consult an expert. Generac has a network of local, authorized dealers that have worked in the industry for decades, which means they will deliver the right solution that fits your needs. They have special planning tools and know how to navigate neighborhood zoning regulations and other local ordinances. By partnering with one of our authorized dealers, you take the guess work out of the project, saving you time, money and frustration.

2

WHAT TO EXPECT

During your appointment, the dealer will ask you questions about your backup power requirements. Based on your feedback, the dealer will recommend a backup generator system that meets your needs and fits your budget.

3

AVOID OVER PAYING

Bigger is not always better. Sizing and installing a home standby generator system can be complicated and it is common for homeowners to buy a bigger, more expensive system than they actually need. Generac dealers will listen to your needs and design a system built specifically for you, ensuring your home and your family stay protected during power outages.

4

A WRITTEN, DETAILED PLAN AND COST ESTIMATE

A Generac dealer will first determine with you what type of coverage you are looking for from your home standby generator. Based on their calculations, they will outline several options that will meet all of your needs, giving you options to guarantee you have the protection you need.

5

COMPETITIVE QUOTES, FOR FREE

When making a purchase, no matter the size, it is always a good idea to shop around. We understand you have options and will want to look into and meet with several installers. We care about you and want to make sure you have the best system to protect you and your family. You will receive free, estimates to help you choose the perfect solution.



SPECIAL BONUS OFFER!

After you have reviewed this guide, take the next step by requesting a free quote. There's no obligation to buy, but if you decide that a Generac Home Standby Generator is right for you, we will include a special limited time bonus offer absolutely FREE!

ACT NOW!

Call Toll Free **1-800-864-7415** or Visit **GeneracHomeGenerators.com**

Power Outages Can Happen Anytime

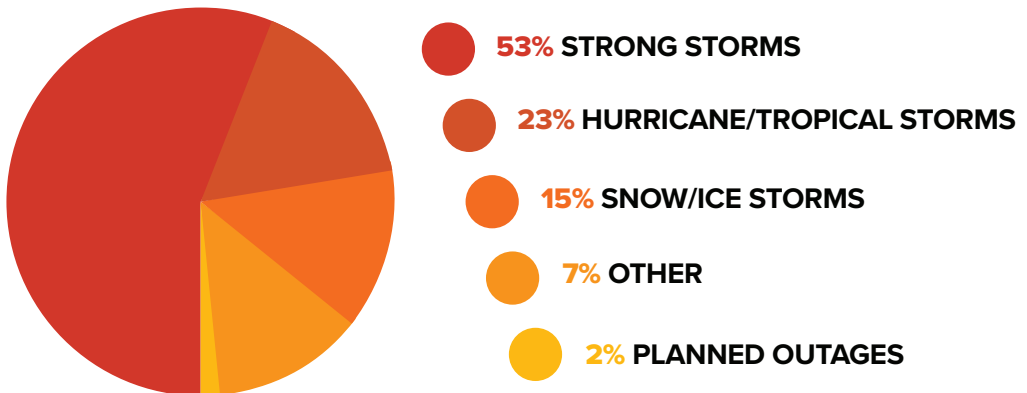
Life changes when utility power fails. During a power outage your home has no lights, heat or central air. Your refrigerator, microwave, laundry equipment, Internet and television are rendered useless. We tend to take these conveniences for granted because they're always available to us. But what happens when they're not?

Power outages have become more prevalent and problematic in recent years, especially in an increasingly connected world. In fact, 78% of power outages in the U.S. are weather related¹, while other causes include vehicle accidents, utility equipment failure, animals and an overworked power grid. In California, for example, utilities have implemented Public Safety Power Shutoffs (PSPS) in an attempt to mitigate the risk of wildfires, instructing customers to prepare for proactive outages lasting several days.

Power outages can also be costly. If you lose power for an extended period of time, you could be forced to pay for:

- Hotel fees
- Replacement of spoiled food
- Burst pipes
- Mold Remediation

Weather Related Power Outages 2019-2022



Source: Generac Research, 2019-2022

¹Blackout: Extreme Weather, Climate Change and Power Outages, Alyson Kenward, PhD, and Urooj Raja, Climate Central: <https://assets.climatecentral.org/pdfs/PowerOutages.pdf>

THE COST OF POWER OUTAGES



\$10,000

Frozen Pipes



\$26,807

Flooded Basement



\$500-\$30,000

Mold Removal



\$110

Alternate Shelter
Per Night



\$250

Restock Refrigerator

Sources:

Michigan Fire Claims, Inc., [MoldRemediationCostGuide.com](https://www.moldremediationcostguide.com), [Hotels.com](https://www.hotels.com), [Fema.gov](https://www.fema.gov)
"Big Cost of Flooding" <https://www.fema.gov/media-library/assets/documents/181549>,
USDA: <https://www.usda.gov/>



Protect Your Home & Family

We are all spending more time at home these days. Our homes have become our offices, schools, gyms – our sanctuaries. That's why there's no better time than the present to prioritize your family's comfort and security by purchasing and installing a Generac home standby generator. It stands guard, ready to provide backup power to your home in the event that utility power fails. With a Generac generator, you'll have lights, water, heating and cooling, and your family and home stay protected.

Here's how it works:

- 1 UTILITY POWER IS LOST**
Perhaps there is a storm. Maybe the electrical grid failed. In any case, the electricity you depend on is suddenly gone.
- 2 YOUR SYSTEM DETECTS THE PROBLEM**
Within seconds, your generator prepares to restore your home's power.
- 3 YOUR GENERATOR TURNS ON**
Whether you're home or away, within a few seconds, it is up to speed and generating electricity.
- 4 YOUR POWER IS RESTORED**
The automatic transfer switch sends generator power to your home, and it will continue until utility power returns.

REQUEST A FREE QUOTE TODAY!

Limited time bonus offer available with purchase. Call toll free **1-800-864-7415** or visit **[GeneracHomeGenerators.com](https://www.GeneracHomeGenerators.com)**.

Portable vs. Automatic Home Standby Power

You may be considering a portable generator for use during power outages. We are the leading manufacturer and distributor of portable generators and they can certainly be used to provide backup power, but there are some key differences to be aware of:



	PORTABLE GENERATORS	AUTOMATIC HOME STANDBY GENERATORS
Uses	Portability makes them ideal for job sites, tailgating, camping or other recreational activities	They are permanently installed at your home, similar to a central air unit
Starting	You must be home when the power goes out to start and connect almost all portable generators	Starts automatically when utility power is lost – whether you're home or away
Connecting	Must be manually connected via transfer switch or extension cord	Permanently connected to your home's electrical system
Refueling	Must be refueled every 6-12 hours, depending on loads and size of fuel tank	No refueling necessary if connected to a natural gas line or propane tank
Capacity	Typically powers only some key appliances	Can power your entire home or selected circuits
Monitoring	You must monitor operation in person	With Mobile Link™ you can monitor the generator's performance from anywhere in the world using a smartphone, tablet or PC



A Solution For Every Need

Generac is pleased to introduce the 26 kW Guardian® Series home standby generator. Now you can have even more power from the most trusted brand in backup power.

- Generac's 26kW home standby generator can start all of your home's large appliances, ensuring your home remains a sanctuary for you and your family.
- 28% more motor starting power* delivers power to meet today's and tomorrow's electrical needs.

**Compared to competitive output air-cooled products*

- Compact with a powerful punch. Takes up to 68% less space*, all while offering 2.6X more power in the same size enclosure as our baseline air-cooled unit.

**Compared to competitive output liquid-cooled products*

- Save up to \$8,000* in product & installation costs.

**Average savings compared to competitive output liquid-cooled products*

- #1 Trusted Brand in Backup Power
With more than 60 years of experience in the backup power industry, it's no wonder why 8 out of 10 home standby generators installed are Generac.

NEW Guardian® 26 kW with Whole House Transfer Switch

Model #7291

Starting at \$7,139 MSRP



U.S. EPA certification pending, shipment contingent upon receipt.

**MORE
POWER.
MORE
PROTECTION.**

**FROM A BRAND
YOU TRUST.**





“



Generac gives us peace of mind because we know we have a power source and we are not going to have to be without.

- DWIGHT A. - LYNN HAVEN, FL

”

Solutions to Meet Your Needs

Generac offers the largest selection of automatic backup generators in the world, which means we will be able to design a backup power solution that's right for you.



POWER JUST THE BASICS

If you prefer a simple, economical approach, our affordable PowerPact™ provides automatic backup protection for essential circuits such as your well pump, refrigerator, furnace and sump pump.

PowerPact™ 7.5 kW

Model #6998

Starting at \$2,049 MSRP



SMART POWER WHERE YOU NEED IT

Our Smart Module Management (SMM) system allows you to get whole house protection, without paying for a larger generator. All of your home's circuits can be protected by cycling power on and off as needed for different appliances and you decide what gets priority.

Guardian® 18 kW with whole house transfer switch

Model #7228

Starting at \$4,789 MSRP*



POWER IT ALL AND SAVE

Many homeowners want the peace of mind that comes with whole house coverage. Whenever there is a power outage, you don't have to worry because the power stays on throughout your entire home.

NEW Guardian® 26 kW with Whole House Transfer Switch

Model #7291

Starting at \$7,139 MSRP*

**Prices do not include tax, SMM system and installation costs, which will vary depending on municipal guidelines and regulations.*

Generator Installation

A local, authorized Generac dealer can have your home standby generator installed usually in 1 day! As experts in home standby power, they are in the best possible position to install your Generac system quickly, professionally and cost effectively.

We strongly encourage you to request a free, no obligation quote to make sure you get the correct size generator for your needs, not just for the size of your house. If you decide to purchase, installation is fast and easy. Here is what is involved:



STEP 1: CHOOSING A SITE

When considering the location for your generator, you will want to find a stable area that is well-drained and does not flood. Keep in mind that the generator cannot be closer than 3 feet from utility meters, air conditioning units, combustibles or anything serviceable. And the closer the site is to the electric meter and the natural gas supply line, the more you'll save on installation. Once the site is chosen, your installer will take care of any required local permits.



STEP 2: INSTALLING A GENERATOR

Prior to placing the generator, the site needs to be prepared. Usually this is achieved by putting down a bed of pea gravel or pouring a cement slab. Your installer will make sure the placement allows for all the right clearances (18" from the house, 60" from doors, windows and fresh air intakes, 36" in front to allow for a technician to perform any future checkups or maintenance).



STEP 3: CONNECTING FUEL AND ELECTRICAL

With the generator itself in place, a transfer switch will be installed next to your main breaker box (in some cases it may replace the breaker box entirely). Wiring is then run, in conduit, between the generator and the breaker box. Then the fuel line is installed.



STEP 4: SIMULATING AN OUTAGE

Once installation is complete, your dealer will simulate a power outage to make sure your new generator and transfer switch work exactly as they should in the event of a power outage. The final step is setting up your generator's "exercise," a weekly test run to ensure that everything is in good working order and ready for a power outage.



Added Protection

Our relationship with you does not end once your generator is installed. Generac proudly stands behind its products and offers extended limited warranties for an added peace of mind.

In addition, many of Generac's local, authorized dealers provide service programs to help your generator get the proper routine maintenance to ensure it's ready to operate when you need it. Service programs can include, but are not limited to:

- Oil Changes
- Oil Filter Replacement
- Spark Plug Replacement
- Battery Replacement
- Mobile Link Dealer Monitoring

FLEXIBLE FUEL OPTIONS

At Generac, we understand that our customers live in rural and urban communities, which can sometimes dictate which fuel options are available. For this reason, we offer flexible fuel options to ensure all customers can receive the protection they deserve.

NATURAL GAS (NG)

The preferred fuel, when it's available. It burns clean, is inexpensive and can supply a generator indefinitely. Line pressure will be checked by the installer to ensure it's sufficient.

PROPANE (LP)

This clean-burning* fuel is stored in a pressurized outdoor tank that needs periodic refills. Commonly used when natural gas is not available.

**When compared to other fossil fuels.*



Our Business is Power

Generac manufactures the widest range of power products in the world including portable, residential, commercial, industrial and mobile generators. We are also the leading designer and manufacturer of manual and fully automatic transfer switches and accessories for backup power applications up to 3.25 MW. Generac has also recently introduced PWRcell, a solar + battery storage system that harnesses power from the sun to power homes and lower electric bills. It can also store energy to provide whole home backup power during utility power outages.

Power Your Life with Generac

Take an inside look at what makes Generac® the leader in Home Standby Power.



24/7/365 CUSTOMER SUPPORT

Generac has a dedicated team standing by 24/7/365 from our headquarters in Wisconsin to provide assistance when you need it.



MOBILE LINK™ REMOTE MONITORING

Allows you to monitor the status of your generator from anywhere in the world using a smartphone, tablet or PC. Easily access information, such as the current operating status and maintenance alerts. Our team of authorized dealers also offers monitoring programs, which enable them to proactively address any issues that may arise, giving you additional peace of mind.



TRUE POWER™ TECHNOLOGY

Delivers best-in-class power quality with less than 5 percent total harmonic distortion for clean, smooth operation of sensitive electronics and appliances.



QUIET-TEST™

This self-test mode runs at a lower rpm for a five or 12 minute test, making generators significantly quieter than other brands while consuming less fuel.

“



You never realize the wrath nature can have until you see 155 mph sustained winds. But **our Generac didn't let us down**; it powered our air conditioner, our fish tank, our refrigerator and freezer. Having a Generac gave me peace of mind knowing I had power.

- RANDY W. - PANAMA CITY, FL

”



Nothing's Built Like a Generac



G-FORCE ENGINE

Is the heart of our Home Standby Generators. You expect a generator to run as long as you need it. Constant use can put an engine under incredible stress, if it isn't built for the challenge. The Generac G-Force engines are specifically engineered to withstand the rigors of generating power, so you can look forward to long life and trouble-free performance.



SMART MANAGEMENT MODULES (SMM)

Saves you money by allowing you to purchase a lower kilowatt generator. SMM supplies backup power to your most essential circuits first and only pushes surplus power to less-essential circuits as it becomes available.



COLD SMART START

Smart technology that monitors ambient temperature allowing the engine to warm up prior to taking on load in cold conditions, reducing wear on the engine.



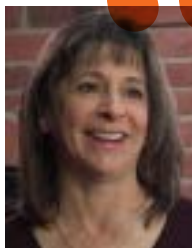
HEAT MANAGEMENT

Designed to run cooler with increased surface area for maximum heat rejection.



FULL FLOW OIL FILTER

The 460cc is the only engine in its class designed to have oil filtration that removes debris from oil, improving the durability of the engine and longer engine life.



If we ever do lose power, I am not going to lose my food, lights or electricity. **My husband and I will be comfortable, safe and warm because I have a Generac.**

- SHARON C. - BOSTON, MA



LOW OIL PRESSURE SENSOR

Shuts down the engine to prevent damage before it happens.



MORE POWER. BETTER EFFICIENCY.

Built specifically for generators.



AUTOMATIC COMPRESSION RELEASE (ACR)

Improving engine start ability and reduces drain on battery (460cc only).



ENGINE STARTER

Engine Starter designed for improved durability and reliability. Rated for 10,000 starts.



PRESSURE LUBRICATION

The 460cc engine has pressure lubrication that ensures oil is immediately present at the start of the engine, allowing the engine to quickly take on the load.





“ A **Generac generator is what saved our belongings and is what ultimately saved us as a family.** There was utter chaos and destruction outside, but my home was air conditioned and I had power.

- JASON C. - PANAMA CITY, FL



Getting Started

Generac has streamlined the process of becoming an owner of an automatic standby generator making it quick and easy.

- 1 REQUEST YOUR FREE QUOTE**
A Generac consumer sales representative will schedule your appointment with a local, authorized Generac dealer.
- 2 INSTALLATION**
Most automatic backup generators can be installed within 1 day.
- 3 PEACE OF MIND**
Begin enjoying your peace of mind. Once the generator is installed, you no longer need to worry about power outages disrupting your life.



**SPECIAL, LIMITED TIME
OFFER! ACT NOW.**

Call Toll Free **1-800-864-7415** or visit
GeneracHomeGenerators.com



“



“We had no power for 8 days. It was the most miserable 8 days, I lost everything in my refrigerator and freezer...so we said never again. As you get older, you need that peace of mind and **we just love our Generac**. I don't have to worry about my cellar being flooded or even my cell phone. My Generac gives me the peace of mind where I don't have to worry, everyone is safe and it makes life simpler.”

- LINDA C. - EAST LONG MEADOW, MA

”

Wattage Worksheet

This worksheet will help you approximate the size of the generator that is right for your home. On the reverse side, you will find estimated power needs for various household items you feel strongly about using during a power outage.

Note that this sheet is intended only to help you narrow down the size of your generator (and the approximate cost). It is not a substitute for requesting a free quote and detailed estimate from an authorized Generac dealer. You can also use the electronic Home Backup Generator Sizing Calculator on Generac.com.

EXAMPLE

TOOL OR APPLIANCE	RUNNING WATTS	ADDITIONAL STARTING WATTS
Refrigerator/Freezer	700	2200
½ HP Furnace Fan	800	2350
Television	500	0
Window AC	15200	1800
Sump Pump – ½ HP	1050	2200

Running Watts v. Starting Watts: Running (or rated) watts are the continuous watts needed to keep items running. Starting watts are extra watts needed for 2-3 seconds to start motor-driven products (e.g. refrigerator, circular saw).

4250 Total Running Watts + 2350 Highest Starting Watts = 6600 Total Watts Needed

With this example, a 7.5 kW unit, (starting at \$1999) would be ideal.

YOUR POWER NEEDS

TOOL OR APPLIANCE	RUNNING WATTS	ADDITIONAL STARTING WATTS

_____ Total Running Watts + _____ Highest Starting Watts = _____ Total Watts Needed

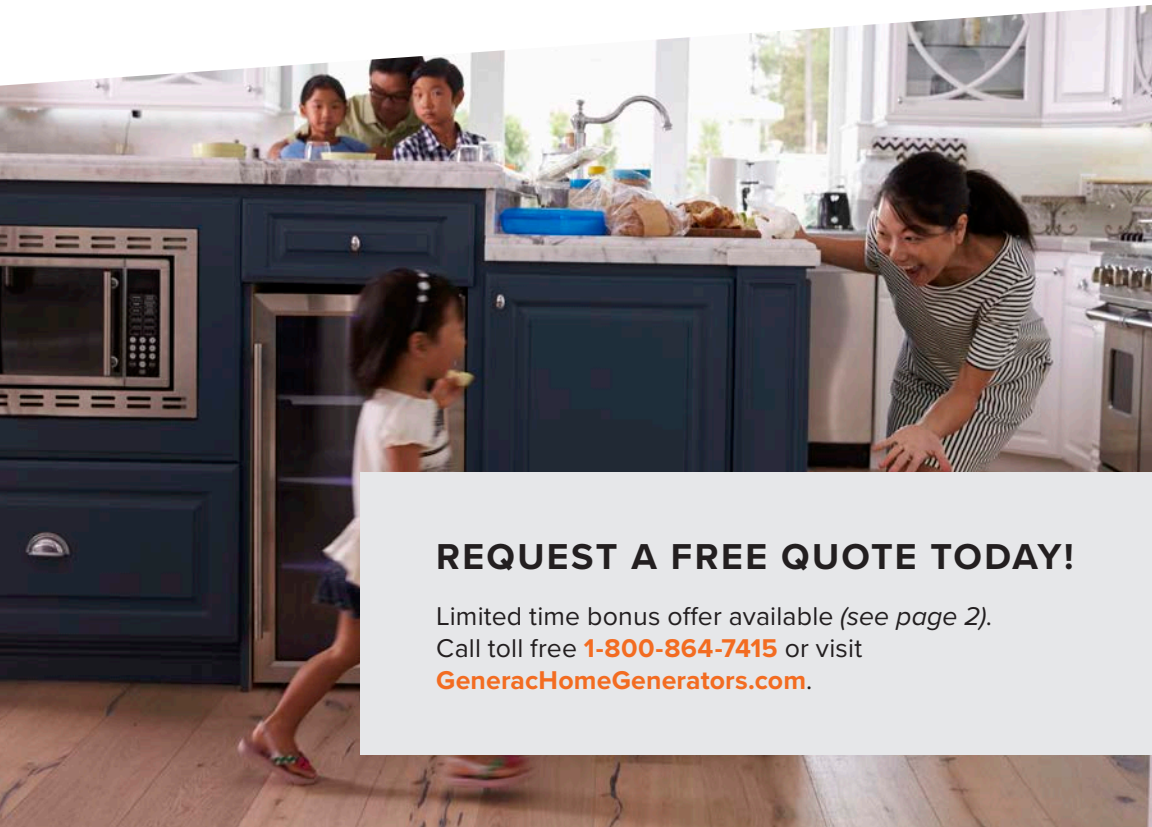
Typical Power Needs by Appliance

	RUNNING WATTS	ADDITIONAL STARTING WATTS	
ESSENTIALS	Light Bulb 60 Watt	60	0
	Light Bulb 75 Watt	75	0
	Refrigerator/Freezer	700	2200
	Sump Pump 1/3 HP	800	1300
	Sump Pump ½ HP	1050	2200
	Water Well Pump 1/3 HP	1000	2200
	Electric Water Heater	4000	0
HEATING/COOLING	Space Heater	1800	0
	Humidifier 13 Gal	175	0
	Furnace Fan Blower ½ HP	800	2350
	Furnace Fan Blower 1/3 HP	700	1400
	Window AC 10,000 BTU	1200	1800
	Window AC 12,000 BTU	3250	3950
	Central AC 10,000 BTU	1500	3000
	Central AC 24,000 BTU	3800	4950
	Central AC 40,000 BTU	6000	6700
Heat Pump	4700	4500	
LAUNDRY ROOM	Iron	1200	0
	Washing Machine	1150	2250
	Clothes Dryer Electric	5400	1350
	Clothes Dryer Gas	700	1800
KITCHEN	Microwave Oven 625 Watts	625	0
	Microwave Oven 1000 Watts	1000	0
	Coffee Maker	1000	0
	Electric Stove 8" Element	2100	0
	Dishwasher Hot Dry	1500	1500
	Food Processor	400	0
	Toaster Oven	1200	0
	Toaster	850	0
Electric Can Opener	168	0	

		RUNNING WATTS	ADDITIONAL STARTING WATTS
LIVING ROOM	TV (55" LED)	90	0
	Wifi Modem/Router	20	0
	Video Game Console	125	0
	Laptop Computer	85	0
MISC.	Security System	500	0
	Garage Door Opener ½ HP	875	2350
	Curling Iron	1500	0
	Hair Dryer	1250	0

These are estimates only. Check your tool or appliance for exact wattage requirements. The wattages listed in our reference guide are based on estimated wattage requirements. For exact wattages, check the data plate or owner's manual on the item you wish to power.

CAUTION: Operating voltage and frequency requirement of all electric equipment should be checked prior to plugging them into this generator. Damage may result if the equipment is not designed to operate with a +/- 10% voltage variation, and +/- 3 hz frequency variation from the generator name plate ratings.



REQUEST A FREE QUOTE TODAY!

Limited time bonus offer available (see page 2).
 Call toll free **1-800-864-7415** or visit
GeneracHomeGenerators.com.



For any questions or to learn more, visit us at
[GeneracHomeGenerators.com](https://www.GeneracHomeGenerators.com)

GENERAC[®]



Life Line Generator Supply
 5700 TENNYSON PKWY 300
 Plano Tx, TX, 75024
 +1 (214) 795-1211

Sizing Report

Rated Nominal Voltage 120 / 240 Single Phase
 Generator Fuel Choice Natural Gas
 Sizing Method (NEC 220) Part IV

General Lighting & Receptacles		Load (kW)
Square Footage Being Covered (ft^2)	1600	4.8
Small Appliance Circuits (20 amps)		
Kitchen Circuits	2.0	3.0
Laundry Circuits	2.0	3.0

	Managed Loads	Estimated (kW)	Nameplate (amps)	240 V	Load (kW)
Fixed-In-Place Appliances & Motors					
Dishwasher		1.5	12.5		1.5
Dryer		5.5	22.92	X	5.5
Microwave		1.25	10.42		1.25
Range - Oven w/ Top		8.5	35.42	X	8.5
Refrigerator		0.8	6.67		0.8

	Managed Loads	Estimated (kW)	Nameplate (amps)	240 V	Load (kW)
Air Conditioning & Cooling					
1.5 Ton Unit		1.5	6.25	X	1.5

	Managed Loads	Estimated (kW)	Nameplate (amps)	240 V	Load (kW)
Heating & Heat Pumps					

	Estimated (LRA)	Actual (LRA)	Utilized (LRA)
Transient Requirement			
Largest Motor's Starting Amps (LRA)	43.1	89.0	89.0

	Load (kW)	NEC Required
Summary NEC Load		
General Lighting & Receptacles	10.8	
Fixed-in-Place Appliances & Motors	17.55	
Sum of all General Loads	28.35	17.340
Cooling	1.5	1.5
Heating (w/demand factors)	0	0
Larger of Heating & Cooling	1.5	1.5
Sizing based on requirements of NEC Article 220: Part IV		18.840
Elevation		0
Minimum size generator for motor starting requirements		14
BTU load required		306000

22 kW Generac Model Generator Recommended

Recommended Pipe Size

Product Line	Generac
Generator kW	22.0
Length of Run	6.0' 0.0"
90 Degree Elbows	2
45 Degree Elbows	0

T Connections

0

1" Pipe Size Recommended

OVERLL CHECKLIST (sample) – for Permanently Installed Residential Generators

Items that are required for a complete submittal.

- If required with submittals to indicate completed

Plans and Documents Required:

- Completed Permit Application
- Applicable Permit Fees
- Complete set(s) of plans with ALL the information required (*Plans sized per AHJ specifications*)
- Copies of installation manuals and spec sheets for each generator, transfer switch(es), and all new equipment

Contractor requirements:

- Verify all Contractor/Installer licensing requirements: General; Electrical; Mechanical; Plumbing/ Gas
- Identify/verify if “Virtual Inspections” are available and/or required.

Cover Sheet:

- Project description and scope
- Project/Owner’s name, site address, contact information, and signature
- Designer’s/Engineer’s name(s), title(s), address(es), signature(s)
- Statement of conformance with applicable codes (State & Local)

Site Plan:

- Identify locations of all existing structures and proposed location(s) of generator equipment
- Location of existing and proposed electrical equipment: main service panel(s), sub panels, transfer equipment, junction boxes, disconnects, and any associated electrical equipment for the proposed installation.
- Generator distances/setbacks to: all existing structures and openings (per NFPA 37), property and lot-lines.
- Calculated or measured maximum sound level (decibel) per local planning/zoning requirements.
- Propane Tank(s) – Location, size, status (new or existing), and distances from structures and generator(s)
- Locations of: Electrical and Fuel/Gas line trenches (if applicable), septic/leach lines, and other underground services

Electrical Load Calculations & Single Line Diagram:

- Load calculation(s) demonstrating capacity of the generator is sufficient for the loads being backed-up.
- Generator size, brand, model, rated output, and incorporated OCPD (if equipped).
- Amperage size and location of main service panels, sub panels, transfer equipment, junction boxes, disconnects, or any associated electrical equipment
- Transfer equipment/switch brand, model, type, rating, and placement within the proposed installation
 - Automatic transfer equipment shall have the capacity to supply the full load that is to be transferred, or the system shall be designed with load management per NEC standards
 - Manual transfer equipment shall have the capacity to supply all equipment intended to be used at one time
- Specify all conductors, cables, and wiring types and sizes proposed for the installation
- Specify conduit/raceway types and sizes to be used throughout the proposed installation
- Grounding and bonding of equipment and generator in compliance with the NEC standards
- Install, locate and mark/identify generator disconnecting means and emergency shut down switch per NEC standards (i.e. 2020 NEC articles – 110.21; 230.85; 445.18; 702.7) and local AHJ requirements
 - Meet NEC **Signage Requirements** (*Use GENERAC Label Sample*)
- Identify Interconnected Electrical Power Production Sources per NEC standards (i.e. 2020 NEC article 705.10)
 - Meet NEC **Signage Requirements** (*Use GENERAC Label Sample*)

Fuel/Gas System & Piping Requirements:

- Provide a Fuel/Gas piping diagram showing pipe size, type, depth, length, and all equipment/appliances served
- BTU requirements of the generator (NG/LPV).
- Demand in BTUs for all equipment/appliances served by the Fuel/Gas system serving the generator
- Calculations for extension(s) of Fuel/Gas piping (NG/LPV).
- Location(s) of fuel supply source(s), fuel tank(s), shut-off valve(s) and sediment tube.
 - *Note: If generator is fueled-by Gasoline, Diesel or Propane – verify the maximum capacities allowed. Stored fuel is in-excess of allowed capacities may be require additional permitting.*

Generator/equipment Pad:

- Generator/equipment pad material type (concrete, reinforced, etc.), thickness, and method of attachment to generator, or prefabricated pad per ASCE-7, etc.

What “special” permitting requirements must be met (?):

- Fire District/jurisdiction permits, inspections
- Fire District/First Responder – requirements for “Centralized” Emergency Disconnecting / Shutdown switching/controls.
- SOUND level concerns – calculations; testing; solutions (barriers); possible exceptions, etc.
- Emissions certifications, etc.
- CO (Carbon Monoxide) Alarms/Sensor installation standards
- Fuel/Gas line (piping) additional/alterations
- Gas Meter upgrades
- Lot-line restrictions
- Flood Zone(s)
- Seismic
- Wind
- Snow (loads and conditions)

Plan for the schedule(s) and timing of required inspections:

- a) If the AHJ or generator manufacturer has specific requirements for a poured concrete pad (thickness, reinforcement/rebar size and spacing, etc.) – it may be inspected as a structural slab.
- b) Underground electrical conduit.
- c) Underground gas line.
- d) Gas test.
- e) Final electrical.
- f) Fire District Inspection(s) – if needed
- g) Permit final.
- h) Potentially, inspections “a, b, c and d” – could be done at the same time (**trip #1**).
- i) Inspections “e”, “f”, and “g” – could be done at the same time (**trip #2**).
- j) If a separate inspection is required for a poured concrete pad, *a third trip could be required.*